



Download from
Dreamstime.com

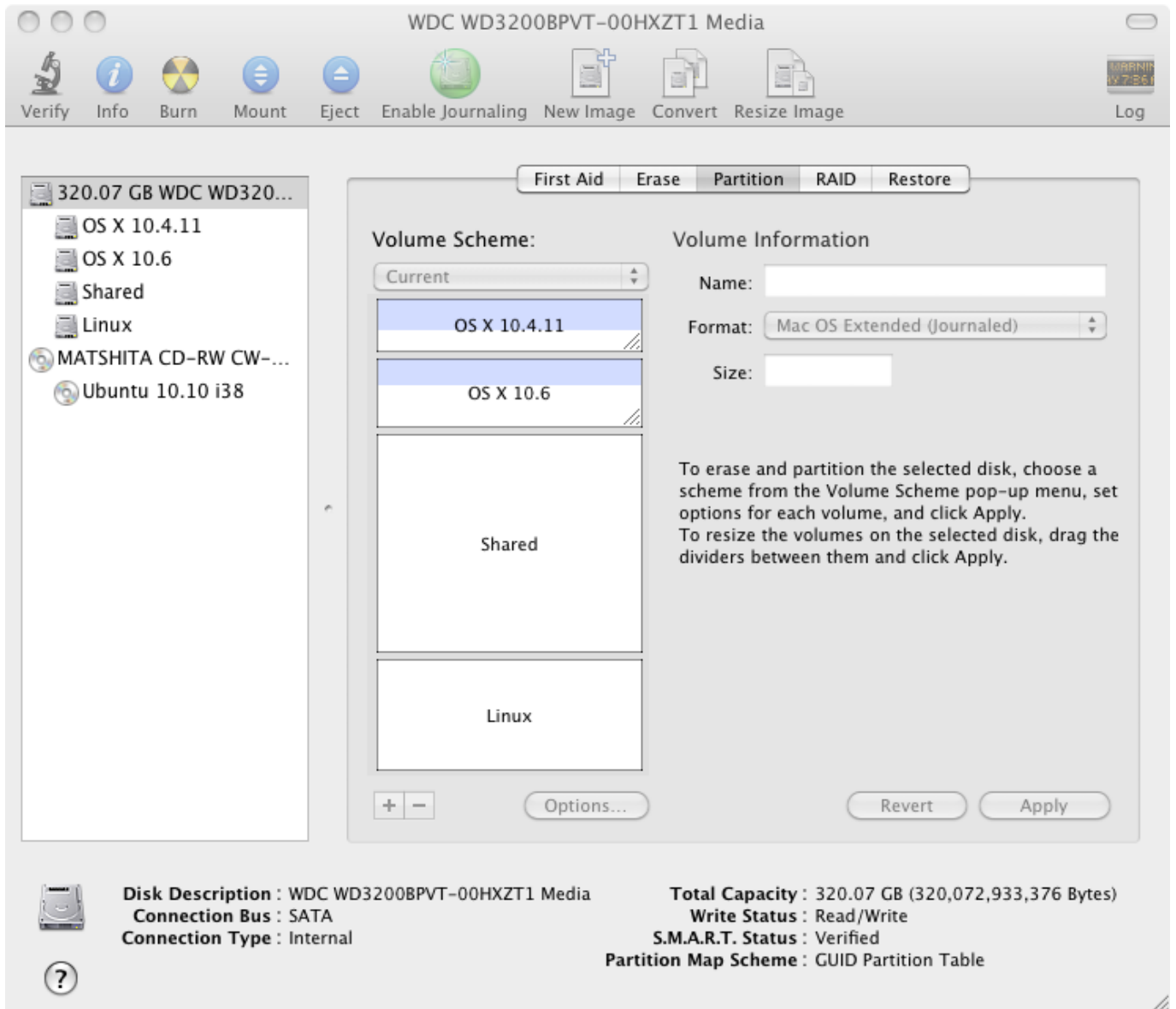
This watermarked comp image is for previewing purposes only.



ID 2468711

© Milan Surkala | Dreamstime.com

[Uefi Emulator Mac](#)



[Uefi Emulator Mac](#)



Download from
Dreamstime.com

This watermarked comp image is for previewing purposes only.



ID 2468711

© Milan Surkala | Dreamstime.com

Intel's original version of this specification was publicly named EFI, ending with the EFI 1.10 version. In 2005, The Unified EFI Forum was formed as an industry-wide organization to promote adoption and continue the development of the EFI Specification.

The UEFI Specification was primarily intended for the next generation of IA architecture-based computers, and is an outgrowth of the 'Intel® Boot Initiative' (IBI) program that began in 1998. The interface consists of data tables that contain platform-related information, boot service calls, and runtime service calls that are available to the operating system and its loader. Using the EFI 1.10 Specification as the starting point, this industry group released the following specifications, renamed Unified EFI. These provide a standard environment for booting an operating system and running pre-boot applications.

uefi emulator

uefi emulator, uefi emulator online, uefi emulator bios, uefi emulator windows, duet uefi emulator, tianocore uefi emulator, cannot launch the uefi emulator, uefi boot emulator, uefi shell emulator, uefi csm emulator, uefi nes emulator, cannot launch uefi emulator

Background The Unified EFI (UEFI) Specification (previously known as the EFI Specification) defines an interface between an operating system and platform firmware.

uefi emulator online

duet uefi emulator

e10c415e6f